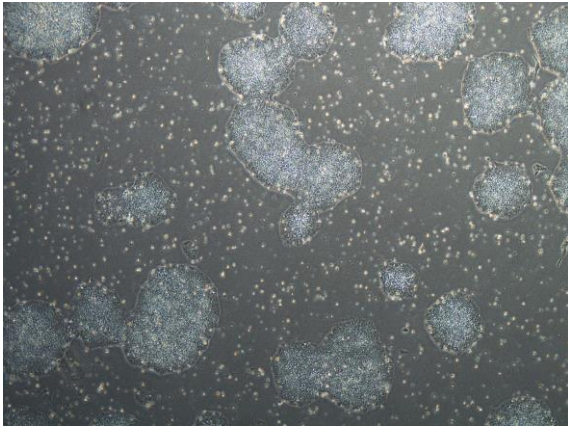
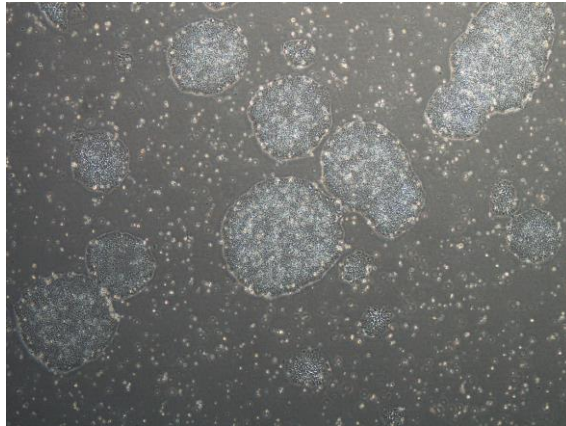


【 CiRA-j-1067 】 Morphology of iPSC colonies

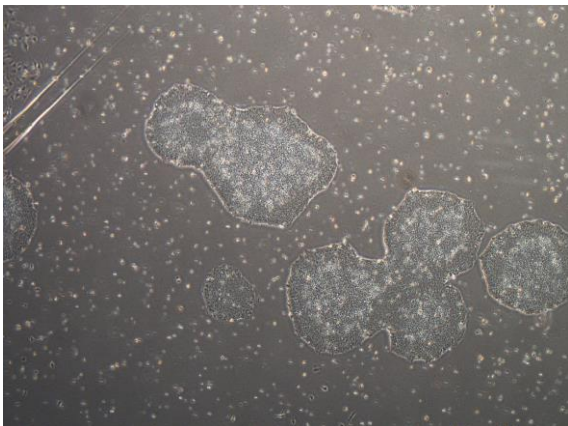
CiRA-j-1067-A: passage-3



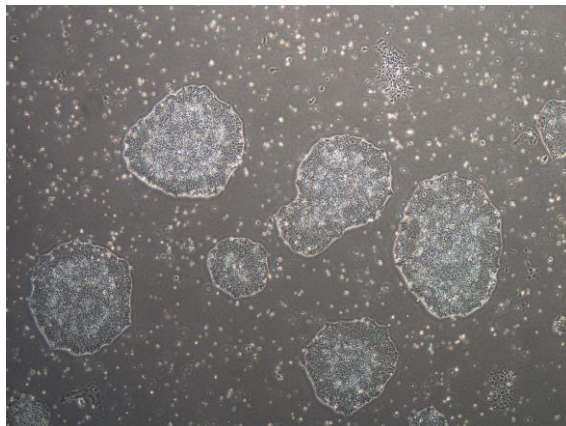
CiRA-j-1067-B: passage-3



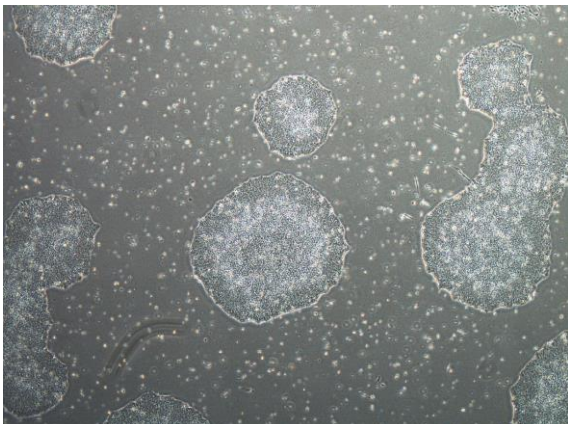
CiRA-j-1067-C: passage-3



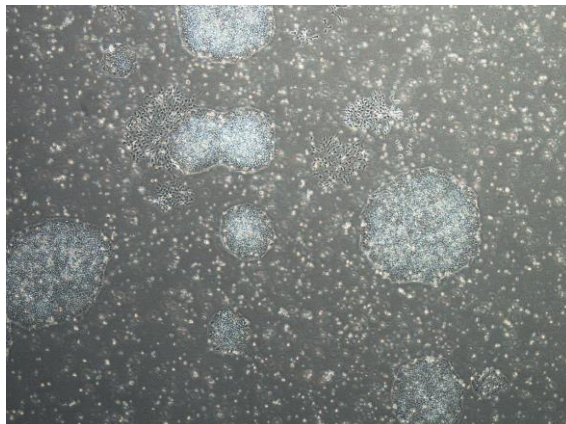
CiRA-j-1067-D: passage-3



CiRA-j-1067-E: passage-3



CiRA-j-1067-F: passage-3



(All images were captured at 4x magnification)